

# Windsor Garden Club September Meeting CT Valley Tobacco Museum Presentation and Tour

Sept. 12  
6:00 pm sharp

Northwest Park  
145 Lang Road Windsor, CT



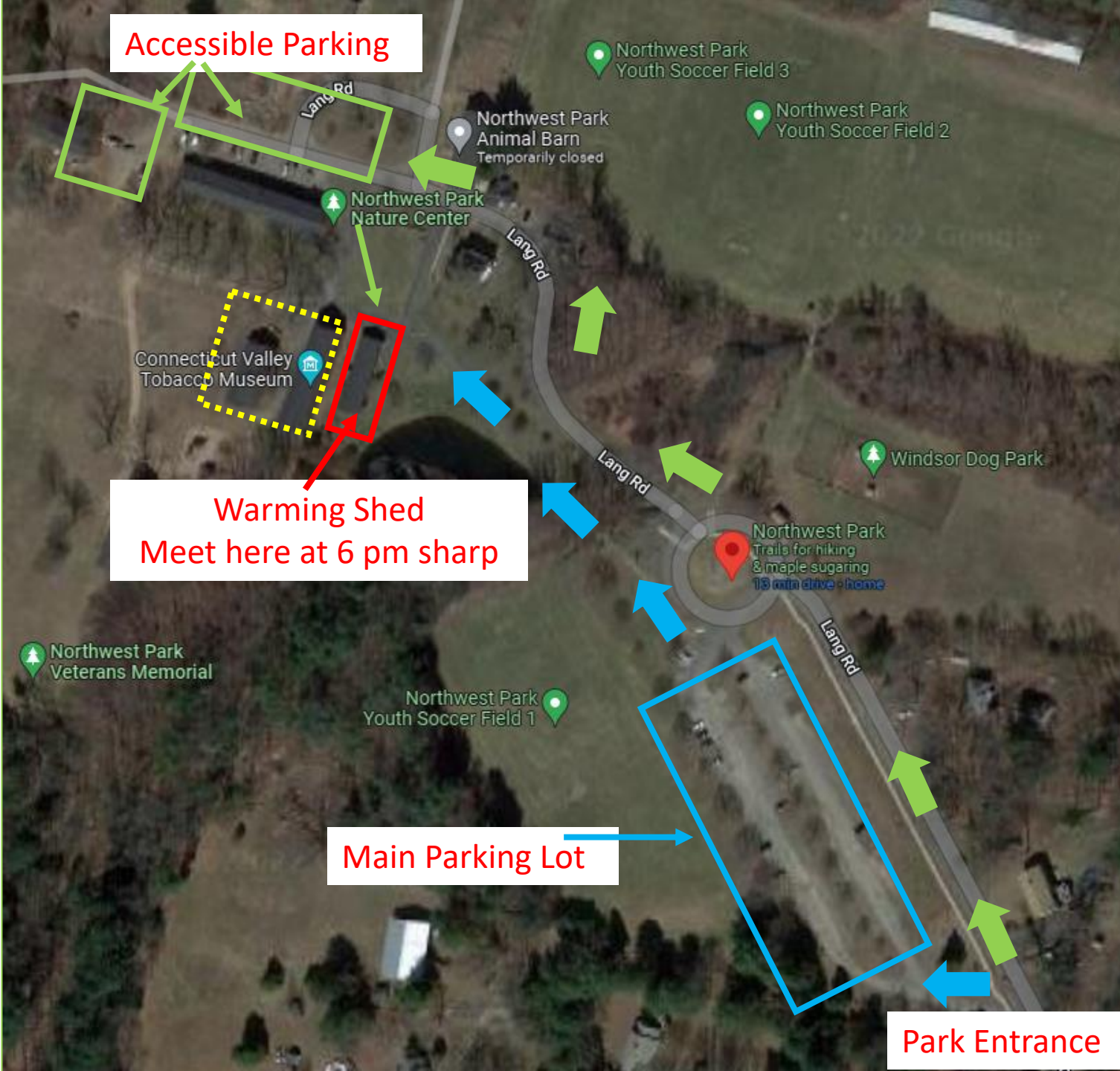
Park in the main lot and walk across the pond to the warming shed if you are capable.



Drive following the green arrows and park in the accessible parking area if you need a shorter walk to the Warming Shed.



We will tour these two buildings (museum and archive building)



Accessible Parking

Northwest Park Youth Soccer Field 3

Northwest Park Animal Barn  
Temporarily closed

Northwest Park Youth Soccer Field 2

Northwest Park Nature Center

Connecticut Valley Tobacco Museum

Windsor Dog Park

Warming Shed  
Meet here at 6 pm sharp

Northwest Park Trails for hiking & maple sugaring  
18 min drive home

Northwest Park Veterans Memorial

Northwest Park Youth Soccer Field 1

Main Parking Lot

Park Entrance